

64 Endless Street  
Salisbury







A very attractive, listed townhouse with well presented accommodation over three floors including three bedrooms, a pretty private garden and home office.

64 Endless Street,  
Salisbury, SP1 3HU

Guide Price:  
£450,000



2



2



0



2

- Stunning C18th Property
- Period Features
- Private Garden
- Three Bedrooms
- Well Appointed Kitchen

- Grade II Listed
- Excellent Condition
- Quality Home Office
- Two Bathrooms
- Centre of the City Location

## The Property

Constructed in the late 18th Century, of brock with a tiled roof, 64 Endless Street is a three bedroom Grade II Listed townhouse, set over three storeys. In recent years the property has been the subject of a thorough and careful programme of restoration and improvement carried out by a well thought of local developer.

Internally the accommodation is spacious and well presented with a well appointed kitchen with feature Belfast sink with a polished granite worksurface and plenty of above and below counter storage.

French doors lead out to low maintenance private rear garden laid mainly to paving slabs leading to a delightful recently built home office.

## Location

Endless Street is situated within the historical city centre. It sits at the edge of Salisbury's medieval chequer system and as such is a very short walk from all of the city's excellent range of facilities - shopping, leisure, educational and cultural as well as the well thought of Playhouse theatre and the market square which hosts a twice weekly charter market.

Salisbury train station is under 3/4 mile across town with trains direct to London Waterloo. Journey time approximately 90 minutes. The magnificent Cathedral Close is under half a miles walk through the city centre.

**Services** - All mains services are connected. Broadbands speeds of 1000mbps are available. All mobiles have good service.

## Tenure

Freehold

## EPC Rating

Exempt

## Outgoings

Council Tax Band: D

## Size

1105qft



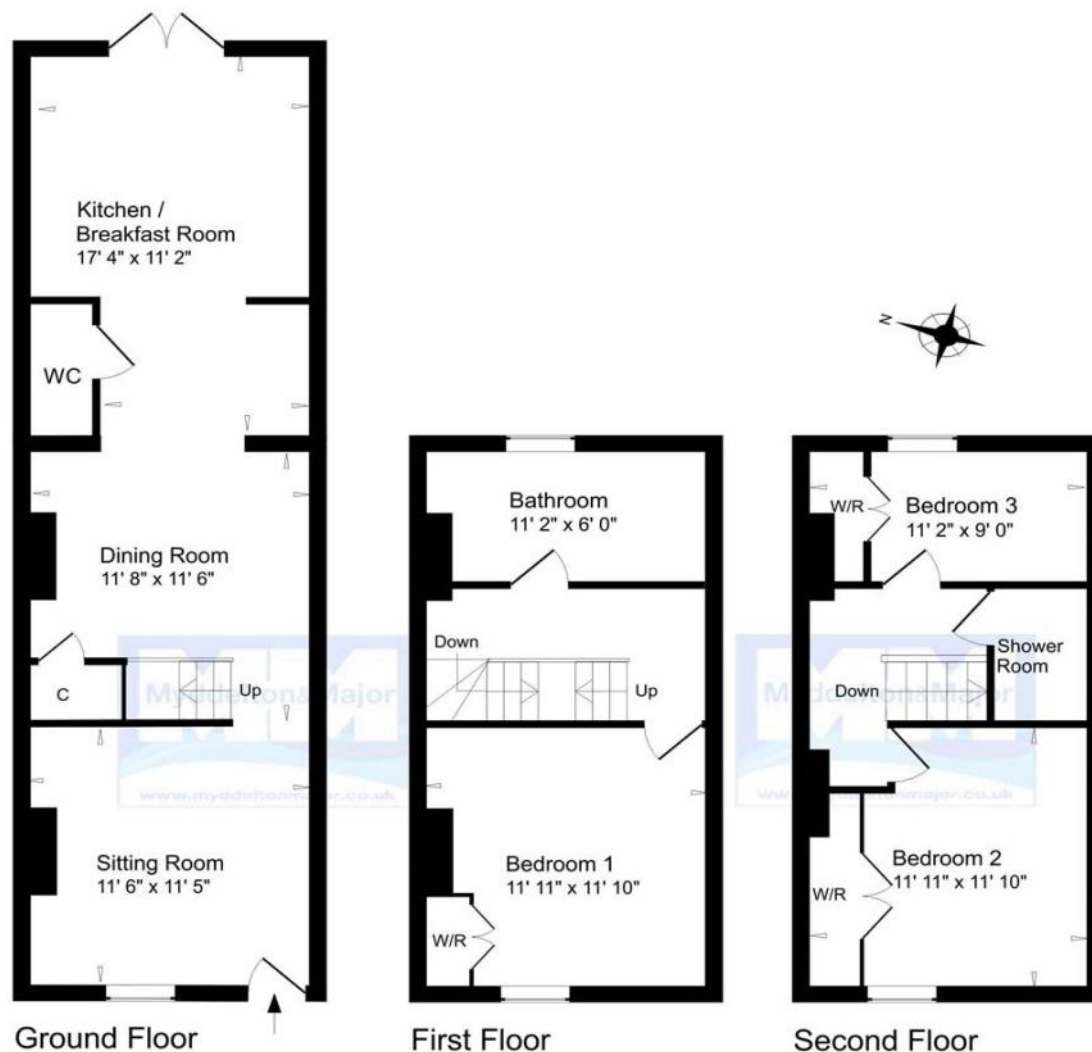




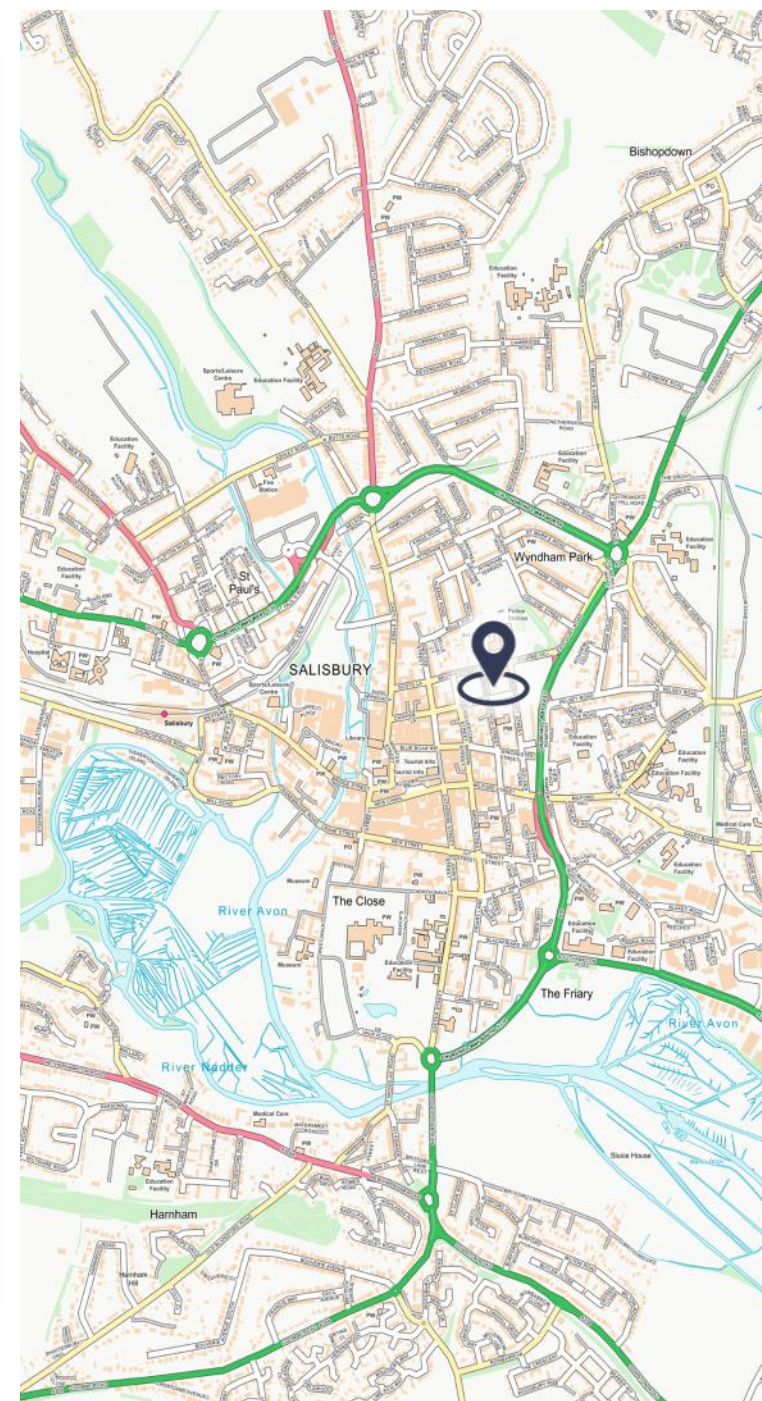








Approximate Gross Internal Floor Area 1,105 Sq. Ft./ 103 Sq. M  
For indicative purposes only. Copyright Jemesis Ltd 2017  
Drawing Number : 164-702j



#### Disclaimer Notice

Myddelton & Major LLP and their clients give notice that:- i) they have no authority to make or give any representations or warranties in relation to the property, ii) these particulars do not form part of any offer or contract and must not be relied upon as statements or representations of fact, iii) any areas, measurements or distances are approximate. The text, photographs and plans are for guidance only and are not necessarily comprehensive. It should not be assumed that the property has all the necessary planning, Building Regulation or other consents, and, any services, equipment or facilities have not been tested by the agent. iv) the purchaser must satisfy themselves by inspection or otherwise.



Call. 01722 337 575  
Email. [residential@myddeltonmajor.co.uk](mailto:residential@myddeltonmajor.co.uk)  
Click. [myddeltonmajor.co.uk](http://myddeltonmajor.co.uk)  
Visit. 49 High Street, Salisbury, Wiltshire, SP1 2PD

